

SERVICE BULLETIN



#081511

New Style Motors for C-Class Style Units

August 2011

Attn: Authorized Service Centers
Re: Service Center Bulletin #081511

Valued Authorized Service Center Partners:

Please know that our Research and Development Team has been testing new Motors over the past few years with great success and as a result has approved the following new Pump and Drive Motors for release for Aquabot C-Class style units. These next generation Drive Motors are highly reliable and efficient brushless motors that are “oil-free”. The new Pump Motors are brushless and offer, like the new Drive Motor, a smaller footprint, which allows for the Filter Bag to have greater expansion and collect even more debris. These motors operate cooler and have upgraded programming for more intelligent and efficient operation.

New Style Pump (Part #A6001T and Part #SA69031) and Drive Motors (Part #SA59001 and Part #SA590010) are each equipped standard with “SK Motor Installation Kit” (Part #SKMSO1) that includes the appropriate Shrink Tubing (Part #1617 and Part #1619) and Butt Connectors (Part #5474) for connecting New Drive Motors to old (Part #A6001T and Part #SA69031) or new Style Pump Motors. New Style Pump Motors may be connected to Old Style Drive Motors utilizing (Part #A4510A and Part #A4510T) Old Style Pump Motors’ Terminal Connectors (Part #4619).

Old Style



Aquabot: A4510A
Aquabot Turbo: A4510T

New Style



Aquabot: SA59001
Aquabot Turbo: SA59010



Aquabot: A6001A
Aquabot Turbo: SA69012



Aquabot: A6001T
Aquabot Turbo: SA69031

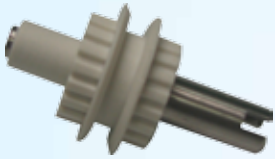
(continued...)

SERVICE BULLETIN (CONTINUED)



When replacing the Old Style Drive Motors (Part #A4510A and Part #A4510T) with the New Style Drive Motors, the following retrofitting parts must also be changed. These parts are available as a 'retrofit kit' called "Service Kit Part #SA59008". This Service Kit must be ordered in addition to the New Style Drive Motors (Part #SA59001 and Part #SA59010).

Quantity	Part #	Description
1	A3605	Pulley
1	5316	Filter Screen
1	4709	Grooved Pin Cover
2	S3116	Floats



A3605



5316



4709



S3116

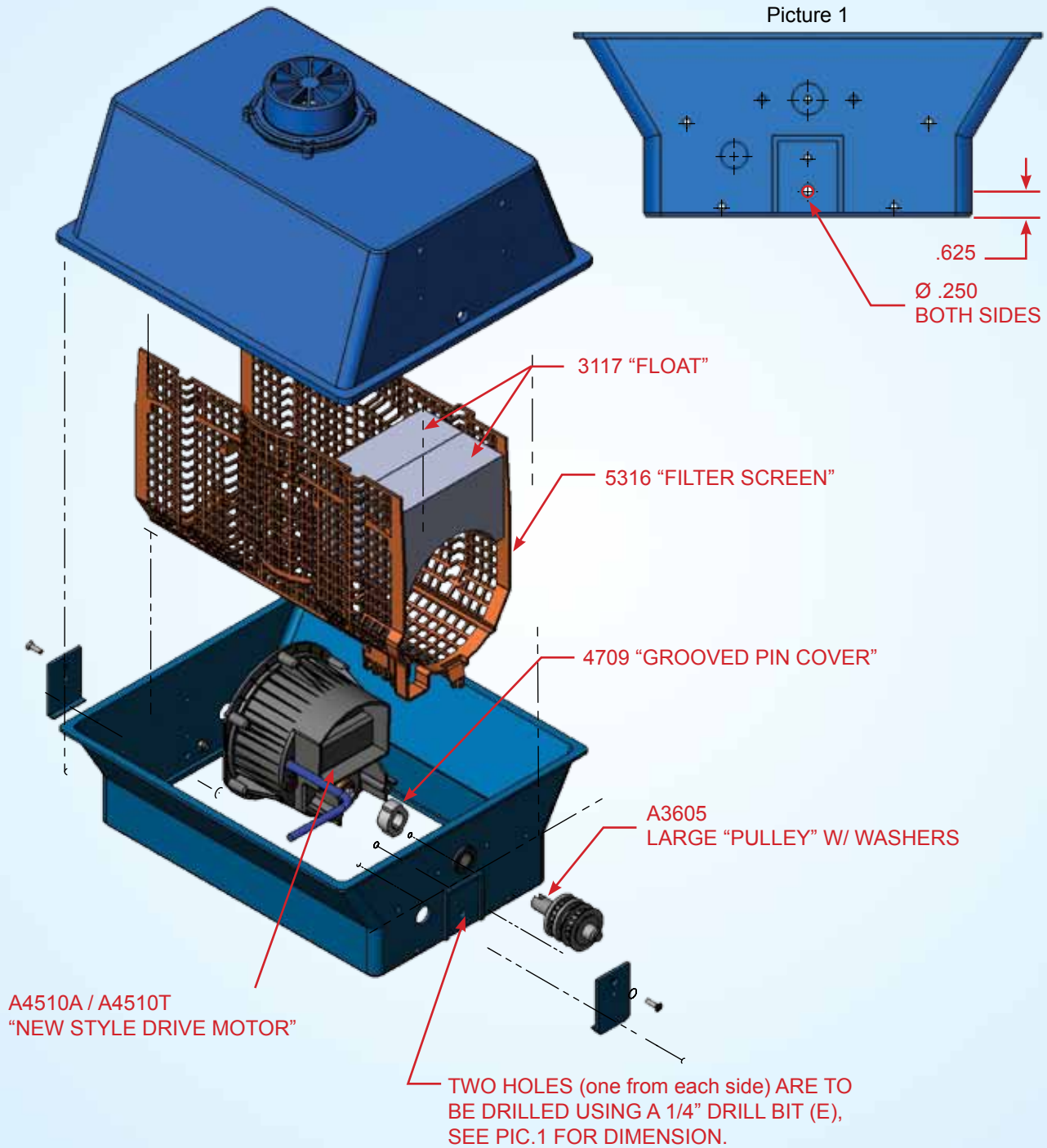
Drive Motor (Part #SA59001 and Part #SA590010) Installation Instructions:

1. Remove the Old Style Drive Motor (Part #A4510A and Part #A4510T) and the Block Float from underneath the Motor, and replace it with the two (2) New Floats (Part #S3116). You may use any form of PVC Glue to secure the new Floats into place.
2. Remove the Old Short Drive Pulley (Part #A3600) and replace it with the New Long Drive Pulley (Part #3605).
3. Remove the Old off-white Filter Screen (Part #5300) and replace it with the New blue Filter Screen (Part #5316).
4. Two holes are to be drilled (one from each side of the Body) using a 1/4" drill bit (see next page).

(continued...)



INSTALLATION DIAGRAM



NOTE: THE OLD DRIVE MOTOR WITH UNDER MOTOR FLOAT, PULLEY AND SCREEN (including the screws) IS TO BE TAKEN OUT OF THE CLEANER BODY.